

2 0 1 6   P R O D U C T   G U I D E





GRADY-WHITE

*"Lumitec's innovation is leading us into a more technically evolved environment."*

– David Neese, Vice President of Engineering, Grady-White Boats



*"Lumitec has provided us with extraordinary service and unmatched innovation."*

– Ralph Torres, Vice President, SeaVee Boats



*"Lumitec really supports our company, providing what we need, when we need it."*

– Mark Beaver, COO, Intrepid Powerboats



# PERFORMANCE RELIABILITY QUALITY

Lumitec is an engineering and design firm solely focused on the conceptualization, development, and manufacture of high-quality extreme environment LED lighting. Our LED fixtures are designed with an in-depth understanding of each light's application and use environment. We leverage this knowledge among our team of highly skilled engineers and designers working in our state-of-the-art LED R&D facility to deliver leading-edge innovation, best-in-class performance, exceptional reliability, and unsurpassed quality.

## TABLE OF CONTENTS:

Flood Lights	02
Interior/Exterior Positionable Lights	06
Dome Lights	07
Down Lights	08
Utility Lights	10
Underwater Lights	12
Specialty Lights	14
Courtesy/Accent Lights	15
Warranty/Support	16

## CONTACT INFORMATION:

Sales Support:

Tel. (561) 272-9840

Fax. (561) 272-9839

Email. [sales@lumiteclighting.com](mailto:sales@lumiteclighting.com)

Lumitec

1405 Poinsettia Drive, Suite 10

Delray Beach, Florida 33444



[lumiteclighting.com](http://lumiteclighting.com)

# FLOOD LIGHTS



**Semi-Recessed**  
17" W X 8.67" L X 1.50" D



**Bracket Mount**  
13.7" W X 7.8" H X 3.76" D



**Surface Mount**  
13.7" W X 5.1" H X 2.11" D



## Triton

This versatile deck/scene/work light can easily replace a high output HID or 1,000 Watt halogen lights. With nearly 13,000 TRUE lumens†, Triton will illuminate an area larger than 37,000 square feet. No restrike or warm-up issues of HID. Forget about power hungry, blisteringly dangerous halogens. Available in 12 or 24vDC, or our universal input AC (110-277vAC, 50-60Hz) along with 3 versatile mounting options.

SKU	MOUNT	VOLTAGE	CRI*	CCT*	VOLTAGE	AMPS	LUMENS†
101113	Bracket	12 VOLT	65+	6500	10-16vDC	13.2A @ 12vDC Only	12930
101153	Recessed	12 VOLT	65+	6500	10-16vDC	13.2A @ 12vDC Only	12930
101156	Surface	12 VOLT	65+	6500	10-16vDC	13.2A @ 12vDC Only	12930
101114	Bracket	24 VOLT	65+	6500	18-28vDC	6.6A @ 24vDC Only	12930
101170	Recessed	24 VOLT	65+	6500	18-28vDC	6.6A @ 24vDC Only	12930
101173	Surface	24 VOLT	65+	6500	18-28vDC	6.6A @ 24vDC Only	12930
101115	Bracket	110-277vAC	65+	6500	110-277vAC	1.34A @ 110vAC Universal	12930
101182	Recessed	110-277vAC	65+	6500	110-277vAC	1.34A @ 110vAC Universal	12930
101179	Surface	110-277vAC	65+	6500	110-277vAC	1.34A @ 110vAC Universal	12930



**Flush Mount**  
6.6" H X 9.6" W X 3.1" D

**NEW**

**Trunnion Mount**  
6" H X 8" W X 3.25" D



## Maxillume h120



The new Maxillume h120 is poised to set a new standard in DC powered deck/work lights. Delivering more than 12,000 TRUE lumens† and housed in a heavy duty aluminum housing, this light is engineered to work hard. Flush mount version was thoughtfully designed to easily replace the ubiquitous GE "QF" series of quartz floodlights. The polished, passivated 316SS bracket on the trunnion mount version leverages Lumitec's ingenious 4-point Posi-Lok® positioning system to ensure that the light stays put through vibration and shock.

SKU	FINISH	COLOR OUTPUT	CRI*	CCT*	VOLTAGE	12VDC	24VDC	LUMENS†
<b>Trunnion Mount</b>								
101346	White	White Dimming	70+	5000	10-30vDC	10A	5A	12000
101347	Black	White Dimming	70+	5000	10-30vDC	10A	5A	12000
<b>Flush Mount</b>								
101348	White	White Dimming	70+	5000	10-30vDC	10A	5A	12000
101349	Black	White Dimming	70+	5000	10-30vDC	10A	5A	12000

\* Lumens, CRI & CCT applies only to white light.

W=Width, L=Length, H=Height, D=Depth, Dia=Diameter

† Integrating sphere measured lumens within 1 minute of initial startup



# FLOOD LIGHTS

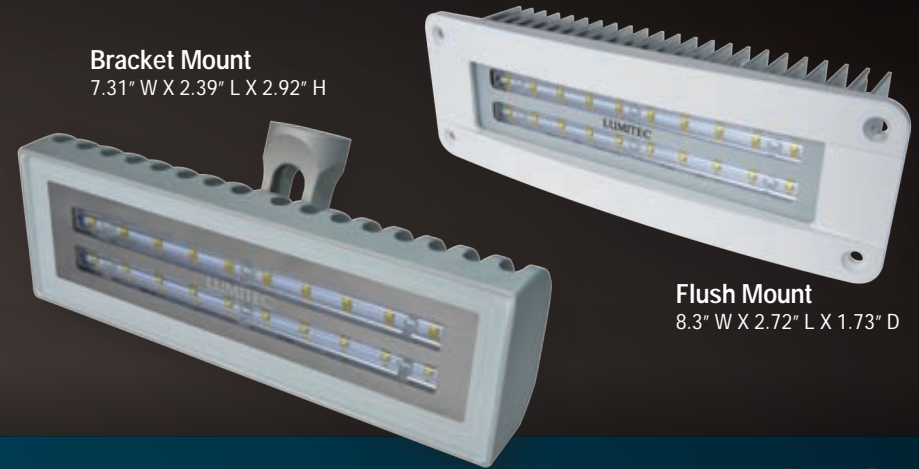
**Trunnion Mount**  
3.15" H X 8.3" W X 2.6" D

**NEW**



**Flush Mount**  
2.72" H X 8.3" W X 2.3" D

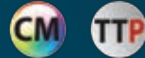
**Bracket Mount**  
7.31" W X 2.39" L X 2.92" H



**Flush Mount**  
8.3" W X 2.72" L X 1.73" D

**NEW**

## Maxillume h60



Customers with high expectations, from the world's top custom yacht builders to the US Coast Guard, have relied on Lumitec's Maxillume line of flood lights for nearly a decade. New for 2016 Lumitec introduces Maxillume h60. Packing more than 6,000 TRUE lumens<sup>†</sup>, the Maxillume h60 boasts twice the output of previous models, new mounting options and our tried and tested internal dimmer control. Each light is designed, hand assembled, and tested at our USA manufacturing facility.

SKU	FINISH	COLOR OUTPUT	CRI*	CCT*	VOLTAGE	12VDC	24VDC	LUMENS <sup>†</sup>
<b>Trunnion Mount</b>								
101334	White	White Dimming	70+	5000	10-30vDC	5A	2.5A	6000
101335	Black	White Dimming	70+	5000	10-30vDC	5A	2.5A	6000
<b>Flush Mount</b>								
101336	White	White Dimming	70+	5000	10-30vDC	5A	2.5A	6000
101337	Black	White Dimming	70+	5000	10-30vDC	5A	2.5A	6000

## Maxillume2



The Maxillume2 offers all the benefits of its predecessors in a smaller, sleeker package, with higher output and a wider coverage area. Equivalent light output to a 200-300W halogen light, yet uses only 20% of the power. Completely sealed machined aluminum housing and Lumitec's proprietary wide beam optical technology. The radially asymmetric pattern puts light where you need it most - meaning more usable light and less wasted power. With internal dimmer and soft-start.

SKU	FINISH	COLOR OUTPUT	CRI*	CCT*	VOLTAGE	12VDC	24VDC	LUMENS <sup>†</sup>
<b>Bracket Mount</b>								
101133	Brushed	White Dimming	70+	4500	10-30vDC	2.95A	1.38A	2100
<b>Flush Mount</b>								
101134	Brushed	White Dimming	70+	4500	10-30vDC	2.95A	1.38A	2100
101135	White	White Dimming	70+	4500	10-30vDC	2.95A	1.38A	2100

\* Lumens, CRI & CCT applies only to white light.

W=Width, L=Length, H=Height, D=Depth, Dia=Diameter

† Integrating sphere measured lumens within 1 minute of initial startup

# FLOOD LIGHTS

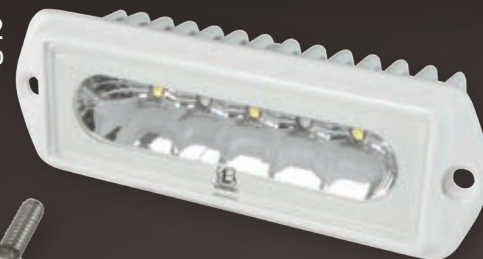


3.7" W X 4.45" L X 3.95" H



**Cayman**

**Capri2**  
4.94" W X 1.75" L X 1.28" D



**Caprera2**  
4.49" W X 1.65" L X 2.83" H

## Cayman



Lumitec's Cayman line of flood lights are the most advanced flood lights on the market today. The Cayman family offers features available nowhere else: dual-color output, monolithic solid metal construction, dimming, and wide beam optical technology. Designed by the same team which developed the world's best-selling 55W halogen replacements, the Capri/Caprera line, Cayman delivers innovation, reliability and unsurpassed performance.

SKU	FINISH	COLOR OUTPUT	CRI*	CCT*	VOLTAGE	12VDC	24VDC	LUMENS†
101251	White	White Dimming, Blue Dimming	70+	5000	10-30vDC	1.92A	.96A	1024
101252	White	White Dimming, Red Dimming	70+	5000	10-30vDC	1.92A	.96A	1024
101259	White	White Dimming	70+	5000	10-30vDC	5.0A	2.5A	4000
101257	Black	White Dimming, Blue Dimming	70+	5000	10-30vDC	1.92A	.96A	1024
101258	Black	White Dimming, Red Dimming	70+	5000	10-30vDC	1.92A	.96A	1024
101261	Black	White Dimming	70+	5000	10-30vDC	5.0A	2.5A	4000

## Capri2/Caprera2



What do you do to improve the industry's best-selling LED flood light? Add features, improve the beam pattern, and increase the output! Lumitec's Capri2/Caprera2 flood lights do just that. Two-color technology provides amazing white output with elegant blue or night-vision preserving red. Our exclusive wide beam optical technology puts the light where you need it most, providing up to twice the usable light of competitors. Fully sealed & IP67 compliant.

SKU	COLOR OUTPUT	CRI*	CCT*	VOLTAGE	12VDC	24VDC	LUMENS†
<b>Capri2</b>							
101099	White Dimming, Blue Dimming	70+	5000	10-30vDC	1.3A	600mA	1000
101100	White Dimming, Red Dimming	70+	5000	10-30vDC	1.3A	600mA	1000
<b>Caprera2</b>							
101102	White Dimming, Blue Dimming	70+	5000	10-30vDC	1.3A	600mA	1000
101103	White Dimming, Red Dimming	70+	5000	10-30vDC	1.3A	600mA	1000

Also available with black housing, contact sales support for SKU numbers.

\* Lumens, CRI & CCT applies only to white light. W=Width, L=Length, H=Height, D=Depth, Dia=Diameter

† Integrating sphere measured lumens within 1 minute of initial startup

# FLOOD LIGHTS



**CapriLT**  
4.94" W X 1.75" L X 1.28" D

**CapreraLT**  
4.49" W X 1.65" L X 2.83" H



3.7" W X 4.45" L X 3.95" H

## CapriLT/CapreraLT



With more than 1,000 integrating sphere tested lumens<sup>†</sup>, the CapriLT and CapreraLT build on the Capri/Caprera legacy to reaffirm market leadership. The LT delivers exceptional reliability and class-leading performance and has been rigorously tested for shock and vibration, water ingress, impact, weatherability, electromagnetic radiation and susceptibility, and overall durability - in short, exceptional value in extreme environment LED flood lighting. Compatible with most PWM LED dimmers.

SKU	COLOR OUTPUT	CRI*	CCT*	VOLTAGE	12VDC	24VDC	LUMENS <sup>†</sup>
<b>CapriLT</b>							
101288	White Non-Dimming	70+	5000	10-30vDC	1.3A	600mA	1000
<b>CapreraLT</b>							
101292	White Non-Dimming	70+	5000	10-30vDC	1.3A	600mA	1000

Also available with black housing, contact sales support for SKU numbers.



## Octane (LED Tower /Spreader Light)



Style, refinement, meticulous design and amazing performance – Lumitec proudly introduces Octane, our wakeboard tower light. Machined from billet 6061 T6 Aluminum and manufactured and hand finished in the USA. The appeal of this light starts long before it is even turned on, but when it's on, it's on! – with 1,000 darkness-piercing lumens<sup>†</sup> to get you to the party, or back, safely. For exceptional output, rock-solid reliability, and distinctive styling nothing comes close.

SKU	FINISH	COLOR OUTPUT	CRI*	CCT*	VOLTAGE	12VDC	24VDC	LUMENS <sup>†</sup>
101330	Brushed	White	70+	5000	10-30vDC	1.3A	600mA	1000+
101331	Black	White	70+	5000	10-30vDC	1.3A	600mA	1000+

\* Lumens, CRI & CCT applies only to white light. W=Width, L=Length, H=Height, D=Depth, Dia=Diameter  
† Integrating sphere measured lumens within 1 minute of initial startup



# INTERIOR/EXTERIOR POSITIONABLE LIGHTS

2.5" Dia. X 2" H

**NEW**



Heavy Duty Base



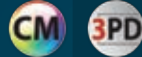
**Brushed**  
1.49" Dia X 2.53" H



**White**  
1.49" Dia X 2.53" H

**NEW**

## Zephyr (LED Spreader/Deck Light)



Lumitec's new spreader light is equally well suited to lighting the foredeck of an elegant sloop or the cockpit of a sport yacht. Mounted on spreaders, spars, radar arches or towers and flybridges at a mounting height of 16 feet, our spreader light brightly illuminates an area nearly 24 feet in diameter with more than 1,000 lumens†. Positionable, sleek and versatile with unsurpassed reliability - meaning no more costly and complex bulb replacements.

SKU	FINISH	COLOR OUTPUT	CRI*	CCT*	VOLTAGE	12VDC	24VDC	LUMENS†
101325	Brushed/White	White	70+	5000	10-30vDC	1.3A	600mA	1000
101326	Brushed/Black	White	70+	5000	10-30vDC	1.3A	600mA	1000

\* Lumens, CRI & CCT applies only to white light.

W=Width, L=Length, H=Height, D=Depth, Dia=Diameter

† Integrating sphere measured lumens within 1 minute of initial startup

## GAI2



Our best-selling positionable light just got better. Lumitec's enhanced General Area Illumination2 (GAI2) light now has TWICE the output and a new, more efficient optical system! GAI2's small size and high output make this light perfect for a wide range of applications: reading light, task light or even a deck or cabin light. Completely sealed and IP67 compliant.

SKU	FINISH	COLOR OUTPUT	CRI*	CCT*	VOLTAGE	12VDC	24VDC	LUMENS†
111809	Brushed	Warm White Dimming	90+	3000	10-30vDC	490mA	245mA	290
111808	Brushed	White Dimming, Red Non-Dimming, Blue Non-Dimming	70+	5000	10-30vDC	500mA	250mA	372
111810	White	Warm White Dimming	90+	3000	10-30vDC	490mA	245mA	290
111828	White	White Dimming, Red Non-Dimming, Blue Non-Dimming	70+	5000	10-30vDC	500mA	250mA	372
<b>GAI2 Heavy Duty Base</b>								
111801	Brushed	Warm White Dimming	90+	3000	10-30vDC	490mA	245mA	290
111800	Brushed	White Dimming, Red Non-Dimming, Blue Non-Dimming	70+	5000	10-30vDC	500mA	250mA	372
111803	White	Warm White Dimming	90+	3000	10-30vDC	490mA	245mA	290
111802	White	White Dimming, Red Non-Dimming, Blue Non-Dimming	70+	5000	10-30vDC	500mA	250mA	372



# DOMES LIGHTS



6.75" Dia X 1.13" H



4.0" Dia X 0.73" H

## Touch Dome



Brilliantly designed. That is what you will think when you use Lumitec's innovative Touch Dome. Of course the light is completely sealed and has no o-rings, baffles, or switches to wear out. But more impressively, unlike old capacitive or e-field switch technology, the Touch Dome is reliable even when wet or wearing gloves. Proprietary Optical Field Sense technology provides on/off, color change and even dimming. Beautifully designed, elegantly functional.

SKU	FINISH	COLOR OUTPUT	CRI*	CCT*	VOLTAGE	12VDC	24VDC	LUMENS†
101097	Stainless Steel	White Dimming, Blue Dimming	70+	5000	10-30vDC	410mA	215mA	244
101098	Stainless Steel	White Dimming, Red Dimming	70+	5000	10-30vDC	410mA	215mA	244

\* Lumens, CRI & CCT applies only to white light.

W=Width, L=Length, H=Height, D=Depth, Dia=Diameter

† Integrating sphere measured lumens within 1 minute of initial startup

## Aurora



Our customers told us they wanted a high-quality LED replacement for the ubiquitous dome light. It had to be bright, with wide even light. They wanted a clean look, an intuitive and reliable switch, and a notable level of quality. We delivered, then added IP67 immersion protection. We then raised the bar with multiple color output options and dimming. Lumitec's Aurora Dome Light stands apart.

SKU	FINISH	COLOR OUTPUT	CRI*	CCT*	VOLTAGE	12VDC	24VDC	LUMENS†
101138	Stainless Steel	White Dimming, Blue Dimming	70+	5000	10-30vDC	210mA	345mA	180
101139	Stainless Steel	White Dimming, Red Dimming	70+	5000	10-30vDC	210mA	345mA	180
101075	White	White Dimming, Blue Dimming	70+	5000	10-30vDC	210mA	345mA	180
101076	White	White Dimming, Red Dimming	70+	5000	10-30vDC	210mA	345mA	180

# DOWN LIGHTS



3.25" Dia. X 1" D

Polished



2.5" Dia. X 1" D

Glass



3.25" Dia. X 1" D

White



## Mirage (Flush Mount)



Lumitec's Mirage down lights remain the best-performing down light on the market today. Utilizing the most efficient emitters commercially available, Mirage boasts incredible output and a profile that is among the slimmest in the industry. In field studies Mirage exceeded the output of 20W halogens\*\* by up to 300%. Completely sealed (IP67 compliant), it is perfectly suited for a variety of indoor or outdoor overhead lighting needs. New for 2016, Mirage is available with our Spectrum full-color output. Select white output, "color-cross-fade", or any color in the rainbow.



SKU: White	Glass	Polished	COLOR OUTPUT	CRI*	CCT*	VOLTAGE	12VDC	LUMENS <sup>†</sup>
113120	113190	113110	White Non-Dimming, Red Non-Dimming, Blue Non-Dimming, Purple Non-Dimming	70+	5000	10-30vDC	490mA	391
113123	113193	113113	White Non-Dimming, NON TTP	70+	5000	10-30vDC	360mA	150
113128	113198	113118	White Dimming, Red Non-Dimming, Blue Non-Dimming	70+	5000	10-30vDC	490mA	391
113129	113199	113119	Warm White Dimming	90+	3000	10-30vDC	500mA	294
113127	113197	113117	Spectrum (RGBW)	70+	5000	10-30vDC	400mA	333

Available in 6 watt outputs or 3 watt "white non-dimming"

\* Lumens, CRI & CCT applies only to white light. W=Width, L=Length, H=Height, D=Depth, Dia=Diameter

\*\*Only 6 watt lights have output greater than a 20 watt halogen in white mode

† Integrating sphere measured lumens within 1 minute of initial startup

# DOWN LIGHTS



## Halo (Flush Mount) Only available in 3 watt outputs



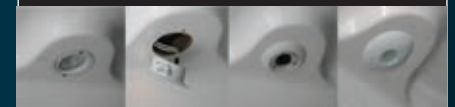
Class-leading output, weatherproof construction, and the simplest installation in the industry. With a shallow-depth profile (less than 1/2" mounting depth) and a secure composite mounting system, the lights are ideal for a variety of indoor and outdoor uses. Intelligent circuitry enables advanced features like dimming and multi-color control without external control modules, specialized switches, or additional wire runs. Completely sealed and IP67 compliant.

## Orbit (Flush Mount) Only available in 3 watt outputs



Orbit Down Lights stand apart from the crowd with a shallow depth profile (less than 1/2" mounting depth) and a secure composite mounting system, the lights are ideal for a variety of indoor and outdoor uses (IP67 compliant).

**The Orbit Retrofit Kit** covers oversized holes (1.875" to 2.750") from old style halogen lights. The ingenious clamp-in design has no exposed fasteners for a clean look inside and out.



HALO /ORBIT	For part numbers, choose base model SKU number by image and select output designation from chart below then substitute the "y" for the number shown.					
SKU	COLOR OUTPUT	CRI*	CCT*	VOLTAGE	12VDC	LUMENS†
y = (0)	White Non-Dimming, Red Non-Dimming, Blue Non-Dimming, Purple Non-Dimming	70+	5000	10-30vDC	300mA	187
y = (3)	White Non-Dimming, NON TTP	70+	5000	10-30vDC	360mA	150
y = (8)	White Dimming, Red Non-Dimming, Blue Non-Dimming	70+	5000	10-30vDC	300mA	187
y = (9)	Warm White Dimming	90+	3000	10-30vDC	300mA	187
y = (7)	Spectrum (RGBW)	70+	5000	10-30vDC	300mA	166

\* Lumens, CRI & CCT applies only to white light. W=Width, L=Length, H=Height, D=Depth, Dia=Diameter

\*\*Only 6 watt lights have output greater than a 20 watt halogen in white mode

† Integrating sphere measured lumens within 1 minute of initial startup



# UTILITY LIGHTS



**Nevis2**

5.0" W X 2.5" L X 0.63" H

**NevisLT**

5.0" W X 2.5" L X 0.63" H

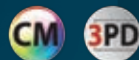


3.5" Dia. X 1" D

**Polished**

**White**

## Nevis2/NevisLT



With more than 1,000 integrating sphere tested lumens, the Nevis2 and NevisLT douses hard to light areas with a 180-degree spread of bright even light. The Nevis2 is the world's FIRST two-color mechanical space and compartment light with 30% more usable light than our successful original Nevis line. Available in white/red or white/blue, certified as ignition protected. Completely sealed and compatible with most PWM LED dimmers.

SKU	COLOR OUTPUT	CRI*	CCT*	VOLTAGE	12VDC	24VDC	LUMENS†
<b>Nevis2</b>							
101147	White Dimming, Blue Dimming	70+	5000	10-30vDC	1.3A	600mA	1000
101148	White Dimming, Red Dimming	70+	5000	10-30vDC	1.3A	600mA	1000
<b>NevisLT</b>							
101296	White Non-Dimming	70+	5000	10-30vDC	1.3A	600mA	1000

## Shadow



The Shadow surface/down light is versatile and tough, with incredible output greater than a 20W halogen\*\*. Available with Lumitec's TTP technology, enabling dimming and color change with a standard 2-wire hookup to any on/off switch. Completely sealed (IP67 compliant) and compatible with 3rd party controllers including dimmers, flashers, and scene controllers with a wide range of available output colors and features, dimming, color change, flashing, and synchronized flashing.

SKU: White	Polished	COLOR OUTPUT	CRI*	CCT*	VOLTAGE	12VDC	LUMENS†
114120	114110	White Non-Dimming, Red Non-Dimming, Blue Non-Dimming, Purple Non-Dimming	70+	5000	10-30vDC	490mA	391
114123	114113	White Non-Dimming, NON TTP	70+	5000	10-30vDC	360mA	150
114128	114118	White Dimming, Red Non-Dimming, Blue Non-Dimming	70+	5000	10-30vDC	490mA	391
114129	114119	Warm White Dimming	90+	3000	10-30vDC	500mA	294

\* Lumens, CRI & CCT applies only to white light. W=Width, L=Length, H=Height, D=Depth, Dia=Diameter

\*\*Only 6 watt lights have output greater than a 20 watt halogen in white mode

† Integrating sphere measured lumens within 1 minute of initial startup

# UTILITY LIGHTS



**Rail2**  
1.11" W X 11.72" L X 0.60" H

**Mini Rail2**  
1.11" W X 5.9" L X 0.60" H



1.73" Dia. X 0.44" H

## Rail2 & Mini Rail2



Greater output! Available in warm white or 3-color versions, with up to 100% more light output. Choose the Rail2 12" light in warm white with dimming for interior spaces, or neutral white 3-color for your exterior or even equipment space needs. The 6" Mini Rail2 is available in your choice of warm white, neutral white, blue or red output.

SKU	FINISH	COLOR OUTPUT	CRI*	CCT*	VOLTAGE	12VDC	24VDC	LUMENS†
<b>Rail2</b>								
101243	Brushed	White Dimming, Red Non-Dimming, Blue Non-Dimming	70+	5000	10-30vDC	1.3A	600mA	900
101242	Brushed	Warm White Dimming	80+	3000	10-30vDC	920mA	430mA	360
<b>Mini Rail2</b>								
101078	Brushed	White Non-Dimming	70+	5000	10-30vDC	360mA	200mA	145
101079	Brushed	Blue Non-Dimming	NA	NA	10-30vDC	360mA	200mA	NA
101080	Brushed	Red Non-Dimming	NA	NA	10-30vDC	160mA	100mA	NA
101241	Brushed	Warm White Non-Dimming	90+	3000	10-30vDC	360mA	200mA	95

## Anywhere Light



Where can you use a light that is attractive, bright, small, completely sealed and withstands the elements, yet blends with well-appointed interiors? Well, anywhere! Lumitec's "Anywhere Light" is the high intensity surface mount light that you don't have to hide. Quality aluminum housing with Type II anodizing for an appealing satin look that will stand up to the elements. Choose white, red, or blue output. Completely sealed, IP67 compliant.

SKU	FINISH	COLOR OUTPUT	VOLTAGE	12VDC	24VDC	LUMENS†
101033	Brushed	White Non-Dimming	10-30vDC	360mA	200mA	150
101034	Brushed	Blue Non-Dimming	10-30vDC	360mA	200mA	NA
101035	Brushed	Red Non-Dimming	10-30vDC	360mA	200mA	NA

\* Lumens, CRI & CCT applies only to white light.

W=Width, L=Length, H=Height, D=Depth, Dia=Diameter

† Integrating sphere measured lumens within 1 minute of initial startup

# UNDERWATER LIGHTS



**NEW**

3.94" Dia. X 0.73" H

**NEW SPECTRUM**



3.94" Dia. X 0.73" H

**SeaBlaze**  
**X**

**NEW**

## SeaBlazeX Spectrum



Our customers asked, and we delivered. Lumitec expands the best-selling underwater light line with the full-color RGB SeaBlazeX Spectrum! Spectrum delivers 2 to 3 times the "dollars per lumen" value as its competitors, with the same reliability, quality, and support that has made SeaBlaze the top selling underwater light in its class. However, Spectrum goes even further, with nearly infinite color output options and user-selectable modes, easy surface-mount, two-wire hookup and no external control boxes.

SKU	COLOR OUTPUT	CRI*	CCT*	VOLTAGE	12VDC	24VDC	LUMENS†
101320	Spectrum	70+	6500	10-30vDC	5A	2.5A	3000

## SeaBlazeX



SeaBlazeX - Twice the output of the SeaBlaze3 and completely surface mountable, the SeaBlazeX housing is bronze alloy with an underwater service life of more than 50 years. The circuitry is completely self-contained and tested to rigorous military standards for EMI, transient voltages, temperature extremes, and mechanical shock and vibration. Can operate above water indefinitely without damage and has a lower profile and smaller footprint than most other lights. No external circuitry and no large through-holes.

SKU	COLOR OUTPUT	CRI*	CCT*	VOLTAGE	12VDC	24VDC	LUMENS†
101140	White, White Cross Fade, White Strobe	70+	6500	10-30vDC	5A	2.5A	4000
101141	Random Cross Fade, White Non-Dimming, Blue Non-Dimming, White/Blue Non-Dimming, Random Strobe	70+	6500	10-30vDC	3.6A	1.7A	NA
101142	Blue, Blue Cross Fade, Blue Strobe	NA	NA	10-30vDC	3.6A	1.7A	NA
101143	Green, Green Cross Fade, Green Strobe	NA	NA	10-30vDC	3.6A	1.7A	NA

\* Lumens, CRI & CCT applies only to white light. W=Width, L=Length, H=Height, D=Depth, Dia=Diameter

† Integrating sphere measured lumens within 1 minute of initial startup



# UNDERWATER LIGHTS



3.91" Dia. X 0.79" H



2.98" Dia. X 0.58" H

SOLD AS A PAIR

## SeaBlaze3



Lumitec's SeaBlaze3 underwater light has firmly established itself as the benchmark for value in underwater lighting. Boasting light output equal to that of competitors costing 3 to 5 times more, SeaBlaze3 is available in 4 output options, including 2 color. Surface mount for fast easy installation. Completely self contained with no external driver boxes to mount.

SKU	COLOR OUTPUT	CRI*	CCT*	VOLTAGE	12VDC	24VDC	LUMENS†
101055	White Non-Dimming	70+	6500	10-30vDC	2.7A	1.3A	1729
101056	Blue Non-Dimming	NA	NA	10-30vDC	2.7A	1.3A	NA
101057	Green Non-Dimming	NA	NA	10-30vDC	2.7A	1.3A	NA
101058	White Non-Dimming, Blue Non-Dimming	70+	6500	10-30vDC	2.7A	1.3A	NA

## SeaBlaze Mini



The diminutive SeaBlaze Mini packs a surprising punch! SeaBlaze Mini leverages many of the technologies utilized in the world's most popular underwater light, the SeaBlaze3, to ensure years of trouble free service. With an actual MEASURED output of nearly 900 lumens<sup>†</sup>, there is simply no better value in underwater lighting. Perfect for smaller trailer boats, skiffs, or dinghies. Sold as a pair.

SKU	COLOR OUTPUT	CRI*	CCT*	VOLTAGE	12VDC	24VDC	LUMENS†
101245	White Non-Dimming	70+	6500	10-30vDC	990mA	450mA	890
101246	Blue Non-Dimming	NA	NA	10-30vDC	990mA	450mA	NA

\* Lumens, CRI & CCT applies only to white light. W=Width, L=Length, H=Height, D=Depth, Dia=Diameter

† Integrating sphere measured lumens within 1 minute of initial startup

# SPECIALTY LIGHTS

## DIESEL



5.5"W X 2.8"H X 4.1"D

**NEW**

**NEW**

### Diesel (Extreme Duty LED Flood Light)



For applications where durability, reliability, and performance are non-negotiable demands, Lumitec designed Diesel. Originally developed for continuous duty on workboats and supply barges, today Diesel is proving its mettle on everything from swamp buggies to forklifts, to off-road vehicles. Completely sealed (IP67), exceptional output (1,000+ lumens†), and like all Lumitec products proudly made in the USA!

SKU	COLOR OUTPUT	CRI*	CCT*	VOLTAGE	12VDC	24VDC	LUMENS†
101303	White Non-Dimming	70+	5000	10-30vDC	1.3A	600mA	1000
101307	White Dimming, Amber Flashing	70+	5000	10-30vDC	1.3A	600mA	1000

**NEW**



3.7"W X 4.45"L X 8"H

## Cayman

Supplied with left/right mounting pads



**NEW**

### Cayman (Jeep Pillar Mount)



The Cayman family offers features available nowhere else: dual-color output, monolithic solid metal construction, dimming, and wide beam optical technology, and now the addition of a Pillar Mount for Jeep vehicles. Cayman delivers innovation, reliability and unsurpassed performance. Choose dual color (white dimming, white dimming with amber dimming, or white with amber flashing).

SKU	COLOR OUTPUT	CRI*	CCT*	VOLTAGE	12VDC	24VDC	LUMENS†
101362	White Dimming	70+	5000	10-30vDC	5A	2.5A	4000
101363	White Dimming, Amber Dimming	70+	5000	10-30vDC	1.92A	.96A	1024
101364	White, Amber Flashing	70+	5000	10-30vDC	1.92A	.96A	1024

\* Lumens, CRI & CCT applies only to white light. W=Width, L=Length, H=Height, D=Depth, Dia=Diameter  
† Integrating sphere measured lumens within 1 minute of initial startup

# COURTESY/ACCENT LIGHTS

1.24" Dia. X 0.75" D



**Echo**

1.0" W X 1.0" H X 0.50" H



**Andros**

0.98" Dia. X 0.44" H



**Exuma**

0.93" Dia. X 0.50" D



**Aruba**

0.88" Dia. X 0.50" D



**Newt**

1.81" W X 1.15" L x 0.53" H



**Barbados**

## Courtesy & Accent



Small, attractive and discreet, these accent lights offer more light output than many 'full size' overhead lights. All measure about 1" in diameter or less. Echo is clean, almost flush, and easy to install. Andros and Aruba offer a wide bright indirect beam. Exuma and Barbados are surface mount and fit about anywhere. Newts are perfect for live wells and engine wells. All suitable for interior or exterior courtesy and accent lighting needs. Fully sealed, IP67 compliant.

### TECHNICAL SPECIFICATIONS FOR ALL MODELS:

Voltage .....	10-16vDC
12VDC .....	45mA
CRI .....	70+ (White Only)
CCT.....	5000 (White Only)
Lumens† .....	19 (White Only)

	ECHO		ANDROS		EXUMA		ARUBA	NEWT	BARBADOS
COLOR OUTPUT	BRUSHED	WHITE	POLISHED SS	WHITE	POLISHED SS	WHITE	STAINLESS	POLYCARBONATE	Black
White Light	112203	112223	101043	101046	101049	101052	101144	101084	101059
Blue Light	112204	112224	101044	101047	101050	101053	101145	101085	101060
Red Light	112205	112225	101045	101048	101051	101054	101146	101086	101061
Warm White	101227	101228	101223	101224	101225	101226	101230	101240	N/A

\* Lumens, CRI & CCT applies only to white light. W=Width, L=Length, H=Height, D=Depth, Dia=Diameter  
† Integrating sphere measured lumens within 1 minute of initial startup



## Customer Support

Lumitec's phenomenal growth is due in large part to our ever growing base of loyal OEMs, channel partners and end users. We take this loyalty seriously and strive to ensure that each interaction with Lumitec is a satisfying one.

Our newly enhanced web site includes a comprehensive "Support Center". Here, you will find Frequently Asked Questions, installation guides, technical details, wiring information, product use videos, and other invaluable product information just a click away.



### TIMED TOGGLE PROTOCOL (TTP)

Timed Toggle Protocol (TTP) control uses brief "off/on" toggles of the light's power switch to select an intensity level or cycle through output modes.



### THIRD PARTY DIMMER (3PD)

3PD products seamlessly integrate with standard 3rd party PWM LED dimmers as well as conventional installations using standard on/off switches.



### COLOR MATCH COMMITMENT (CM)

Lumitec has partnered with the world's leading diode manufacturers to establish standards to prevent any mismatch of color across our complete product range.

## Warranty

### Lumitec Limited Warranty

This product is warranted to be free from defects in workmanship and materials for a period of three years from the date of original purchase. Should your Lumitec product prove defective during the warranty period, promptly notify Lumitec and return product with freight prepaid. Lumitec will, at its option, repair or replace the product without charge for parts or labor, or refund purchase price. Products repaired or replaced under this warranty shall be warranted for the unexpired portion of the warranty applying to the original product(s). Lumitec is not responsible for product failure caused by abuse, neglect, improper installation, or failure in applications other than those for which it was designed, intended, and marketed. No warranty or affirmation of fact, express or implied, other than as set forth in the limited warranty statement above is made or authorized by Lumitec. Any liability for consequential and incidental damages is expressly disclaimed. Lumitec liability in all events is limited to, and shall not exceed, the purchase price paid.

FOR MORE INFORMATION ON OUR COMPANY  
AND PRODUCTS VISIT [LUMITECLIGHTING.COM](http://LUMITECLIGHTING.COM)  
OR CALL (561) 272-9840



TEL. 561.272.9840

FAX. 561.272.9839

WEB. [LUMITECLIGHTING.COM](http://LUMITECLIGHTING.COM)

1405 POINSETTIA DRIVE, SUITE 10  
DELRAY BEACH, FLORIDA 33444



**EdgeWater**  
POWER BOATS

*"Doing business with Lumitec is very easy; their products are top notch and their service is excellent."*

– Peter Truslow, President, EdgeWater Powerboats

**HAVIS**

*"Lumitec is incredibly valuable to us because they actually come to us with solutions we hadn't even thought of, and wouldn't have thought possible."*

– Joe Bernet, President, Havis



*"Lumitec's responsiveness is exemplary. I wish all our suppliers would deliver the level of support and attention that Lumitec does."*

– Frank Kingseder, Vice President, Liberty Coach



L U M I T E C L I G H T I N G . C O M



RECREATIONAL MARINE • TERRESTRIAL VEHICLES • CUSTOM/SPECIALTY APPLICATIONS