



**1998 Post Marine 47 Convertible**

**US \$229,000**





















































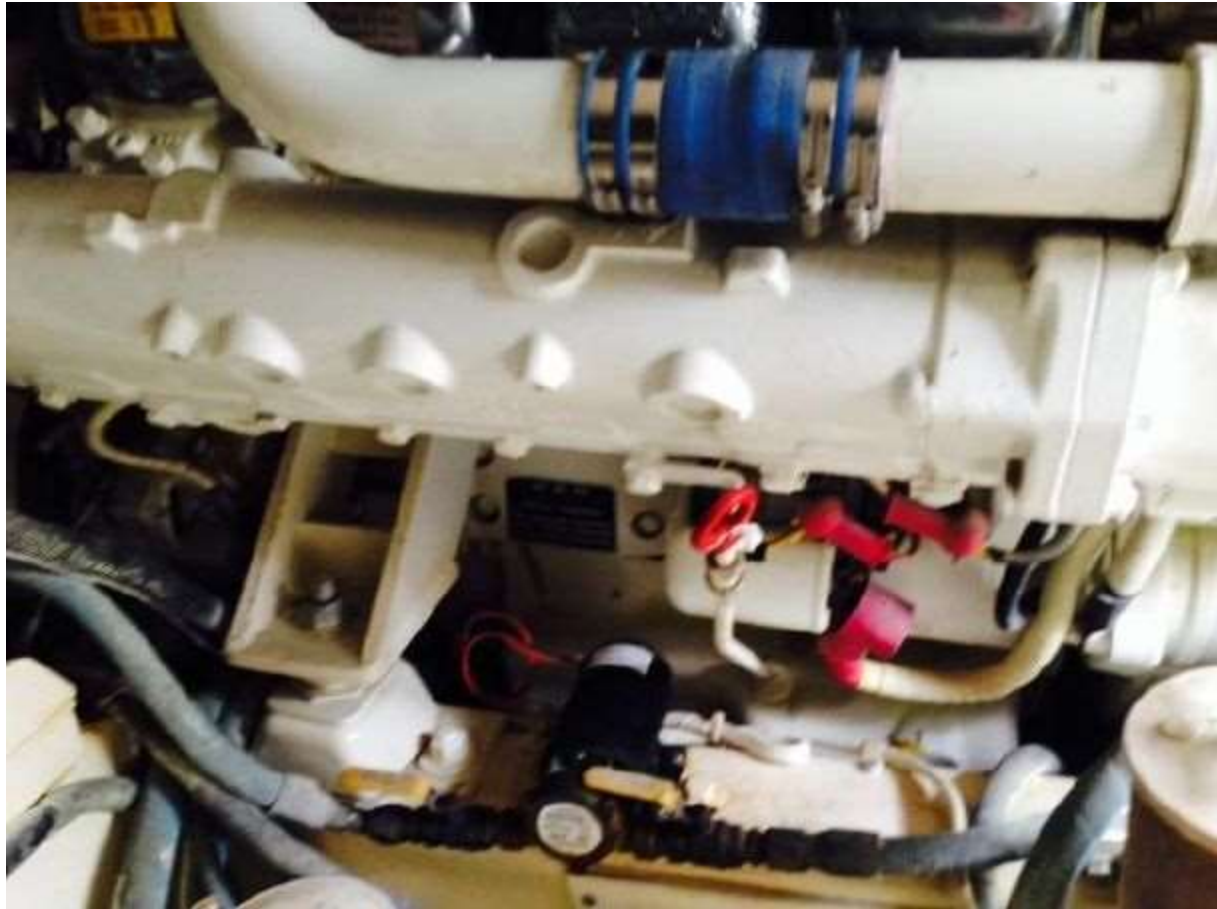














1 / 29

- Description

Year: 1998  
Length: 47'  
Engine/Fuel Type: Twin

Hull Material: Fiberglass

Current Price: US\$ 229,000

- [View Full Specifications](#)

#### **Additional Specs, Equipment and Information:**

##### **Specs**

Builder: Post Marine

##### **Dimensions**

LOA: 47 ft 0 in  
Beam: 15 ft 9 in  
Maximum Draft: 4 ft 2 in  
Displacement: 49668 lbs

##### **Engines**

Total Power: 1360 HP

Engine 1:  
Engine Brand: MANs  
Engine Type: Inboard  
Engine/Fuel Type: Diesel  
Engine Hours: 2400  
Engine Power: 680 HP  
Engine 2:

Engine Brand: MANs  
Engine Type: Inboard  
Engine/Fuel Type: Diesel  
Engine Hours: 2400  
Engine Power: 680 HP

Cruising Speed: 27 knots  
Maximum Speed: 32 knots

#### **Tanks**

Fresh Water Tanks: (120 Gallons)  
Fuel Tanks: (635 Gallons)

#### **Walkthrough:**

"I BELIEVE II" features the guest stateroom forward in the bow area. The guest head is aft to port. The master stateroom is amidship to the starboard with private ensuite head. The galley is mid-level with the dinette to starboard and a very spacious salon.

#### **Salon:**

- L-shaped convertible sofa
- Upholstered chair
- Teak coffee table
- Dinette with teak tabletop
- Mitsubishi TV/VCR
- Pioneer VSX350 stereo w/6 disc CD
- SMX A/C controls

#### **Galley:**

- Mid-level
- Kenmore refrigerator/freezer
- Insta hot water
- Corian countertop
- Microwave
- Princess 2-burner stove top
- Teak & holly sole
- Washer/dryer located in companionway

#### **Master Stateroom:**

- Walk-around queen sized berth
- Night tables
- Built-in TV
- Ensuite private head w/stall shower

**Guest Statreroom:**

- Over/under berths
- Hanging locker
- Guest head with stall shower

**Helm:**

- (2) International teak helm chairs(Pompanette)
- Furuno Navnet C-map plotter/depth
- Datamarine depth sounder
- Datamarine speed/distance
- (2) Quartz lights
- Glendinning synchronizer
- Robertson AP300 autopilot
- Northstar 951X GPS
- ICOM M502 VHF
- Furuno radar
- Trim tab indicator
- EPIRB
- Clarion AM/FM stereo w/CD player

**Deck:**

- Bow pulpit with rails
- Simpson-Lowrance windlass
- Fender holders
- Givens 6 man inflatable life raft

**Electrical:**

- Onan 8 KW generator
- Retractable shore power cord

**Engine Room:**

- CruiseAir reverse cycle A/C
- Fire suppression system
- Bilge pumps
- Racor fuel filters
- Fuel shut off valve



**Fishing Equipment:**

- Upgraded Helm chairs - tan leather over custom chairs
- Murray Brothers fighting chair
- Rupp double-spreader outriggers
- Tackle drawers
- (2) Large fish boxes
- Tackle center with sink
- Fresh/saltwater washdown
- Rocket launcher with 6 rod holders
- (4) Flush mount rod holders
- (2) Additional rod holders
- Retractable electric cablemaster
- Transom door
- Bait freezer
- Engine room access